

COMPOSITE FLOOD DOOR INSTALLATION GUIDE

The Flood Defender Door is suitable for use on residential and smaller commercial properties to protect doorway apertures against water ingress. The door is Kitemark™ Certified to BS 851188 and manufactured for use on single, inward and outward opening doors, as well as double (UPVC) outward opening doors. Also available with a Low Threshold.

DELIVERY CHECKLIST

- Check the door thoroughly for any damage or defects and photograph if any are present
- Check you have the correct keys



IMPORTANT – Any errors/defects must be notified in writing within 3 days of delivery and BEFORE installation. Returns/complaints will not be accepted beyond this point.



IMPORTANT – Weights may vary depending on size of door/s ordered. Customers to make necessary risk assessments prior to lifting doors.

REMOVAL OF EXISTING DOOR

- Check sizes of existing opening / new door
- Remove existing door & ask customer if they would like to retain it or if they would like it take away - all rubbish should be removed from property

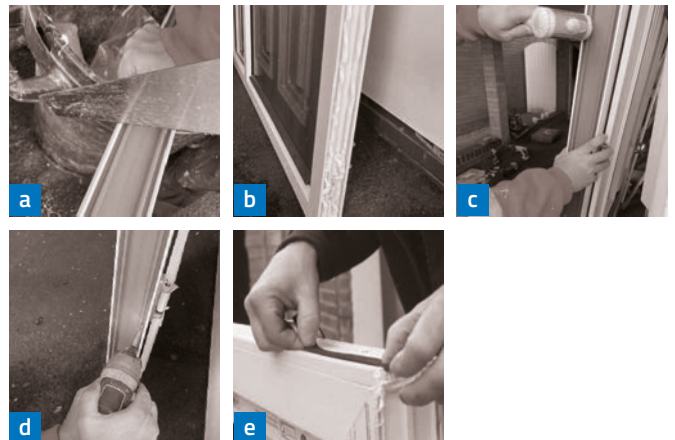
DOOR PREPARATION

- Remove protective film from frame and door
- Fit handle from Homeowner Box
- Mark location for fixings on internal edge of frame at 150mm / 300mm / 300mm from top & bottom of door



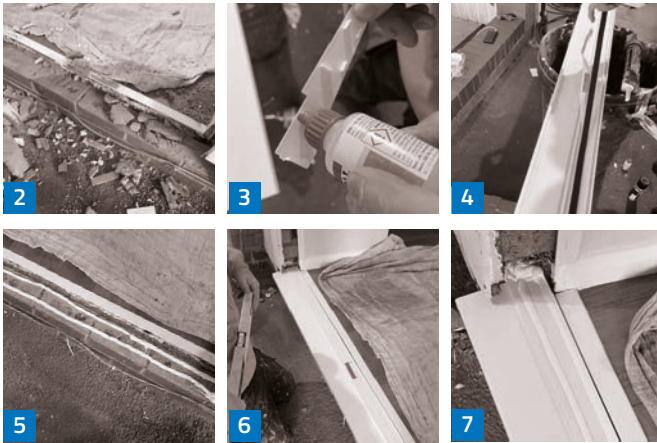
DOOR PREPARATION - ADD-ONS

1. When attaching add-ons, to increase the width of the frame, follow these steps: *If not then continue to Installation - Frame*
 - a. Measure the add-on to ensure height matches door & cut to size
 - b. Prepare Pro-bond and apply to edge of door 1m from bottom
 - c. Fix add-on to pro-bond and secure using a glazing hammer
 - d. Fix every 200mm on left and right side of extension, repeat on both sides
 - e. Apply compriband on both edges of door up to 1m and across bottom (*see step 8 for more details on application of compriband*)




INSTALLATION - CILL

2. Remove any damp course or loose cement from under cill - *if left this could potentially allow water ingress*
3. Prepare the cill, fit end caps using glue, to both ends
4. Apply compriband to base of cill
5. Apply 2 lines of silicon generously to the brickwork
6. Sandwich cill to brick and bed in using glazing hammer
7. Check cill is level and apply another 2 lines of silicon to back edge in preparation for the frame ensuring there are no voids



INSTALLATION - FRAME

- 8. Apply compriband on the bottom of the frame and both sides of the frame up to 1000mm

 **DO NOT run a continuous strip of compriband around corners it won't be able to expand correctly**

- 9. Apply 2 rows of silicon across the top of the cill. Ensuring there are no voids
- 10. Apply silicon on brick work up to 1m high from cill
- 11. Slide door into place from the bottom
- 12. Ensure door is level and make sure there is no bow
- 13. Begin fixing the door using previous marks made during 'Door Preparation' at 150mm / 300mm / 300mm
- 14. Apply silicon to any fixings lower than 1m in height

Check door operation using main door handle. To adjust, loosen the two screws in the keep (the lock can be adjusted later) reposition and tighten as necessary



INSTALLATION - GLASS

- 15. Apply sealant to rubber seals within sash
- 16. Fit panel /glass into position. Seal around the panels/glass both internally and externally
- 17. Ensure panel/glass are 'toe & healed' correctly. To lock adjustment – line up lines on locks to keep
- 18. Ensure the lock can be operated /locked easily
NB: Ensure there is compression creating a watertight seal
- 19. Add lock off screws into hinges and fit hinge covers once all trim is complete



INSTALLATION - COMPLETION

- 20. Once door is operational, seal surrounding brickwork/aperture
- 21. Trim inside/ outside neatly for a professional finish. Double check all panels/glass is sealed below 1m
- 22. Add weep vents and seal with silicon
NB: DO NOT BLOCK THE FRONT OR BACK EDGE WITH SILICONE
- 23. Install knocker, *if required*, measure, mark and install
- 24. Use compo to fill any gaps created around cill to give a good finish
- 25. Clean door/frame both internally and externally with approved UPVC cleaning solution to complete the install
- 26. Handover to homeowner & explain the importance of the 12 month annual inspection warranty period
- 27. Ensure customer signs documentation for completed works

