



Flood Defender French Doors

The Flood Defender French Door is a highly engineered flood defence product. Visually and functionally, in non flood conditions, the door performs as a 'standard' PVC French door.

The unit features a number of sophisticated internal components enabling the unit to perform as a flood proof unit.



Manufactured to bespoke widths and heights

- Kitemarked to BS 851188-1:2019
- Designed to mitigate against rising flood waters up to a height of 900mm
- Can be manufactured to a variety of bespoke widths and heights
- Unique integral one way weep vent
- Wide range of styles, glazing and door furniture
- 2 year manufacturer's guarantee*



Copyright © 2021 M3 Floodtec. All rights reserved.

Technical Information

Applications

The Flood Defender French Door is designed to mitigate against rising flood waters up to a height of 900mm, and can withstand standing water, wave and current.

The Flood Defender French Door can be manufactured as a bespoke item to a variety of widths and heights, and can incorporate both fully glazed panels as well as full or part PVC panels. Widths beyond a double french door size (1800mm) can be incorporated by the inclusion of PVC or glazed side panels.

Guarantee

- 2 year manufacturer's guarantee*

** To maintain the 2 year warranty on locking mechanisms and gaskets, the door must be serviced 12 months after installation at the occupants/owner's expense by a qualified and certified installer.*

Certification

The M3 Floodtec Flood Defender French Door has passed the rigorous testing criteria of BS 851188-1:2019.

Construction

- Design allows for full adjustment in extreme (hot and cold) weather conditions
- Handles and locks designed specifically to be substantially more resilient to everyday use
- Innovative one-way weep vents at the bottom of the door prevent pooling

Options

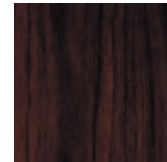
- Flood Defender French Door can be manufactured to bespoke heights and widths
- Wide range of styles, glazing and furniture. Choices brochure available on request or from www.m3floodtec.com
- Available in 5 colours:



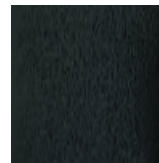
White (W)



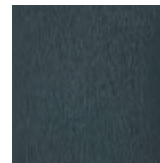
Sherwood Oak (S)



Rosewood (R)

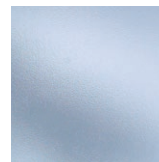


Black Brown (BB)



Anthracite (A)

- Available in 4 glazed options:



Stippolyte



Minster



Cotswold



Autumn

